

MpegCheckWare Pid Viewer



1704, Lucky Commercial Centre
103-109 Des Voeux Road West
Sheung Wan, Hong Kong
Tel: +852 2850 8383 Fax: +852 2850 8182

Stream Monitoring



- ✓ Pid frequency distribution (Graphical display)
- ✓ Hexadecimal data of the Pid payloads
- ✓ All Pids present in the file
- ✓ Stream composition with each Pid's frequency expressed as percentage
- ✓ Detailed PMT and PAT table makup
- ✓ System information (SI) table, CA and Network table information

Allows offline analysis of Mpeg 2 files. Pids, PATs and payload data can be seen with corresponding raw hexadecimal code. ASI streams can be examined in large or small sections or on a Pid by Pid basis as required. The software also shows the distribution of individual Pids within the stream highlighting "burst" problems.

Designed to be complementary to existing hardware based tools Pid Viewer presents previously unseen information to the engineer for a surprising low cost.

Pid viewer displays all the Pids present in a stream showing their Hexadecimal and denary Pid numbers and their relative occupancy of the stream expressed as a percentage. From the generated list an individual Pid can be selected and the stream scanned to show not only maximum and minimum spacing, (expressed as number of Pids between each successive selected Pid), but also the average.

A frequent chart is also produced so an at a glance assessment can be made of the Pid frequency distribution, relevant to troubleshooting many complex multiplex problems.

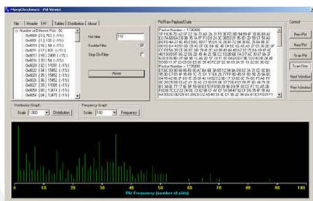
Specifications Mpeg Checkware

Operating System Compatibility

Microsoft Windows 2000® or Windows XP® running with a processor at least 1.4GHz.
The software is dongle protected and requires a USB port on the computer on which it is running.
Options for a network based solution and/or multiple licenses are available.

File Type Accepted

The transport stream file must be stored as binary data on hard disk drive or other standard PC media.
The Stream format must comply with ISO/IEC 13818-1
The maximum file size should not exceed 4.4GB



List tab of Pid viewer showing frequency distribution of selected Pid

All details contained in this literature are believed to be correct at the time of printing however they are subject to change without prior notice and do not form part of any contract.