

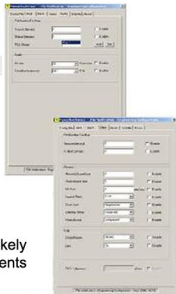
MpegCheckWare Verification

ASI File Verification



1704, Lucky Commercial Centre
103-109 Des Voeux Road West
Sheung Wan, Hong Kong
Tel: +852 2850 8383 Fax: +852 2850 8182

- Video, Audio, DVB Subtitle and transport stream verification
- Checks to PAT and PMT tables
- Pid Remapping
- Works in the transport stream layer
- Windows Application and works with either Windows 2000® or Windows® XP.



The Verification checks stored Mpeg 2 files for critical errors in the PAT and PMT, likely to cause downstream equipment failure. In addition it verifies video and audio elements have the correct format for playout such as aspect ratio, chroma format, sampling frequency etc. There are two graphic interfaces, (GUIs) for the software; engineering and operator. The engineering GUI, shown opposite, allows the configuration of all the settings forming a template. The operator GUI can then simply be used to select the correct file and verification template returning a pass or fail result. A detailed engineering log is created showing the reasons for the pass or fail of the file.

Verifying an Mpeg 2 file against a battery of parameters including, PMT and PAT table checks, video bit rate and audio sampling frequencies. Has the facility to remap Pid numbers on the video, audio and subtitle streams to alternative Pid numbers.

Ideal for NVOD and other similar applications ensuring critical Mpeg 2 parameters and checked prior to playout. Individual verification profiles are configured from a wide variety of possible checks, these can then be saved for later use. This powerful software tool also allows Pids to be remapped to alternate Pid numbers.

The Engineering GUI can also be used to remap the Pid numbers of video and audio Pids, entering the corrected value in the PMT and PAT as necessary. This extremely powerful software tool allows effective management of server base Mpeg 2 files eliminating concerns regarding the playout of files.

Specifications Mpeg Checkware

Operating System Compatibility

Microsoft Windows 2000® or Windows XP® running with a processor at least 1.4GHz. The software is dongle protected and requires a USB port on the computer on which it is running. Options for a network based solution and/or multiple licenses are available.

File Type Accepted

The transport stream file must be stored as binary data on hard disk drive or other standard PC media. The Stream format must comply with ISO/IEC 13818-1
The maximum file size should not exceed 4.4GB

All details contained in this literature are believed to be correct at the time of printing however they are subject to change without prior notice and do not form part of any contract.

MpegCheckWare
Verification